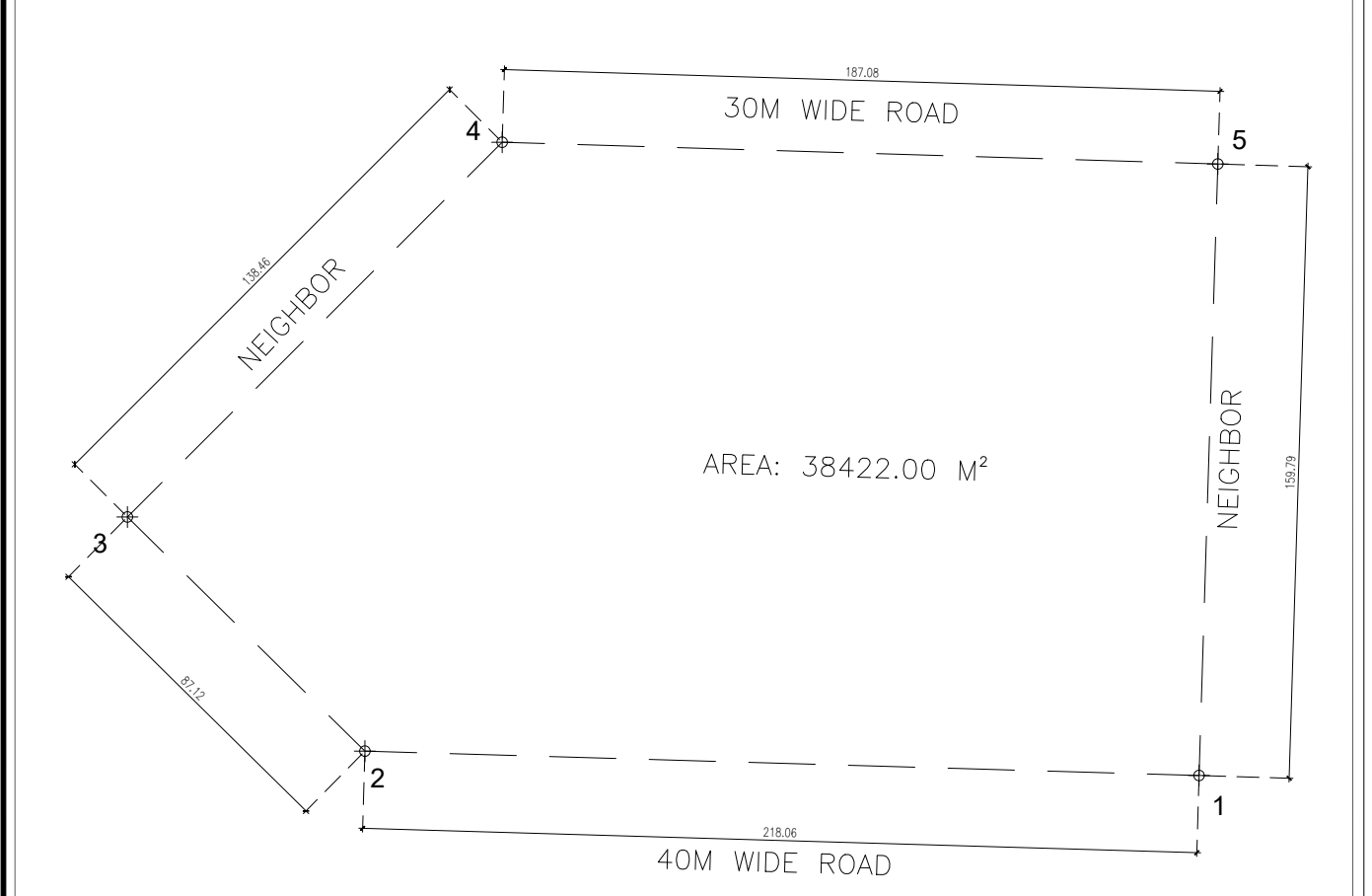


INDUSTRIAL CITY JEDDAH 1

PARCEL CORNER COORDINATES

CORNER	EAST	NORTH
1	524127.24	2367314.67
2	523909.27	2367321.03
3	523847.22	2367262.18
4	523945.15	2367480.06
5	524132.14	2367474.38



KEY PLAN
 NOT TO SCALE

LOCATION : JEDDAH / 2
 TOTAL AREA : 38422.00 M2

SCHEDULE OF SET BACK

	NORTH	EAST	WEST	SOUTH
LENGTH	187.08 M	159.79 M	138.46 M	218.06 M
SETBACK	13.50 M	10.00 M	15.84 M	6.88 M
PERCENTAGE				

LAND UTILITY SCHEDULE

DESCRIPTION	AREA	BLDG. HEIGHTS	PERCENTAGE TOTAL AREA
BUILT AREA:	27525.34 M²	13.40 M	71.63 %
SIDE WALK AREA:	243.91 M²	0.15 CM	0.64 %
GREEN AREA:	547.75 M²	0.15 CM	1.42 %
CAR PARKING AREA:	229.88 M²		0.57 %
LOADING / UNLOADING AREA:	600.70 M²		1.56 %
SET BACKS/ASPHALT ROAD AREA:	9283.42 M²		24.18 %
PRODUCTION BUILDING:	14276.06 M²		37.38 %
STORAGE AREA HANGER:	11486.58 M²		29.91 %
TOTAL LOT:	38422.00 M²		100.00 %

LEGEND:

SYMBOL	DESCRIPTION:
[Hatched Box]	AS-BUILT HATCH AREA



MODON IS NOT LIABLE FOR ANY MISINTERPRETATION REFLECTED HEREIN.
 DISCLAIMER : CONSULTANT WILL TAKE FULL RESPONSIBILITIES FOR EVERY ACTIONS INTERPRETED IN THE DRAWING.

CONSULTANT :
MASS ADVANCED CONSULTING ENGINEERS S.A.L.
 Design & Supervision / Construction Management / Value Engineering / Factories
 شركة حسين حسن بياري للإستشارات الهندسية
 Email: admin@massadvanced.com / +966 55 44 36 588 / www.massadvanced.com

Architectural	XX		
Structural	XXX		
Electrical	XXX		
Sanitary	XX		
Mechanical	XX		

Date: Revision: Description: Checked By: Appr'd:

MO-DAY-YR	Rev 01	DESCRIPTION	CHECKED BY	APPR'D
MO-DAY-YR	Rev 01	XXX	MO-DAY-YR	MO-DAY-YR
MO-DAY-YR	Rev 01	XX	MO-DAY-YR	MO-DAY-YR
MO-DAY-YR	Rev 01	XXX	Checked	Approved

INDUSTRIAL CITY JEDDAH 1

MODON CONTRACT NUMBER:	CLIENT:
25001009	
LOT NO. 0330C00107	BLOCK: 346
LEASE AGREEMENT NO.:	LOT AREA: 38422.00
SHEET CONTENTS	MASTER PLAN/LAYOUT-FIRST FLOOR PLAN/ELEVATIONS- SECTION & DETAILS
Scale: 1/100	DWG NO. AR-01
	SHT. NO. 1/1

